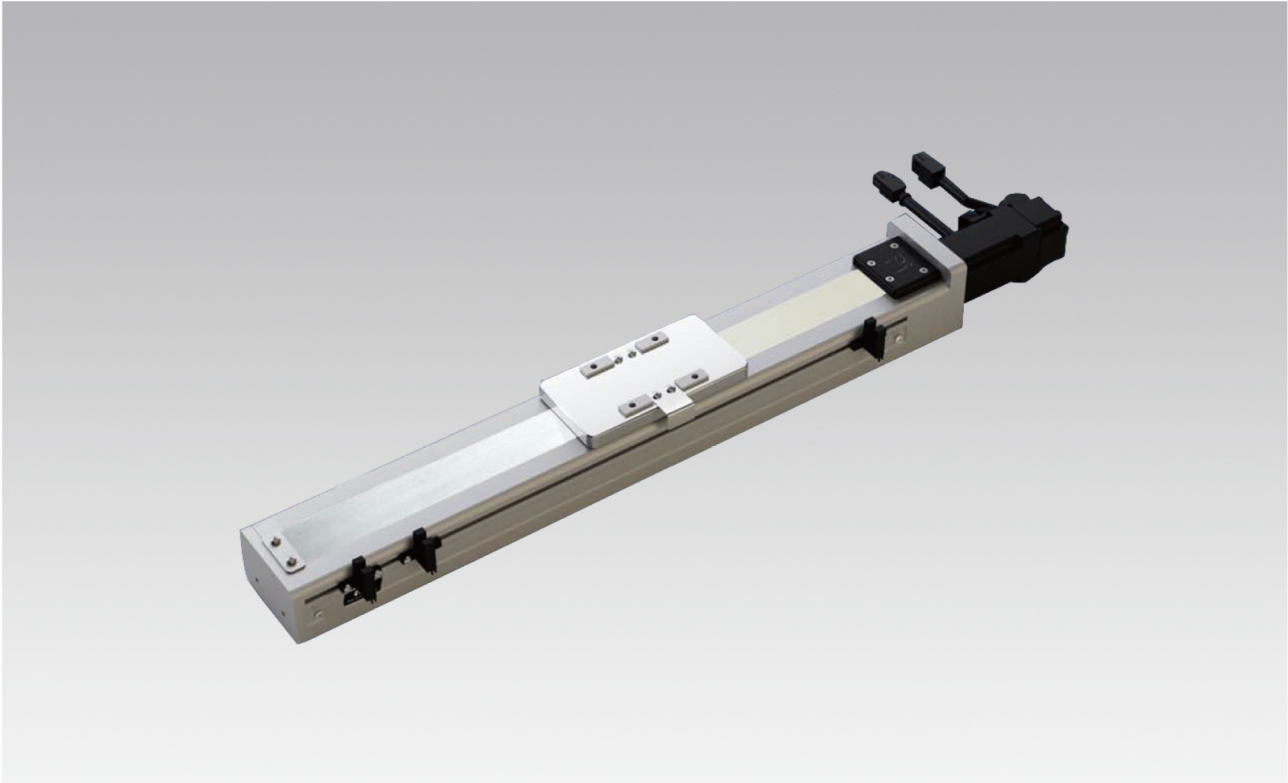




MY60A滾珠絲桿傳動密封系列



最大行程 800mm
Maximum Stroke

最高速度 500mm/s
Maximum Speed

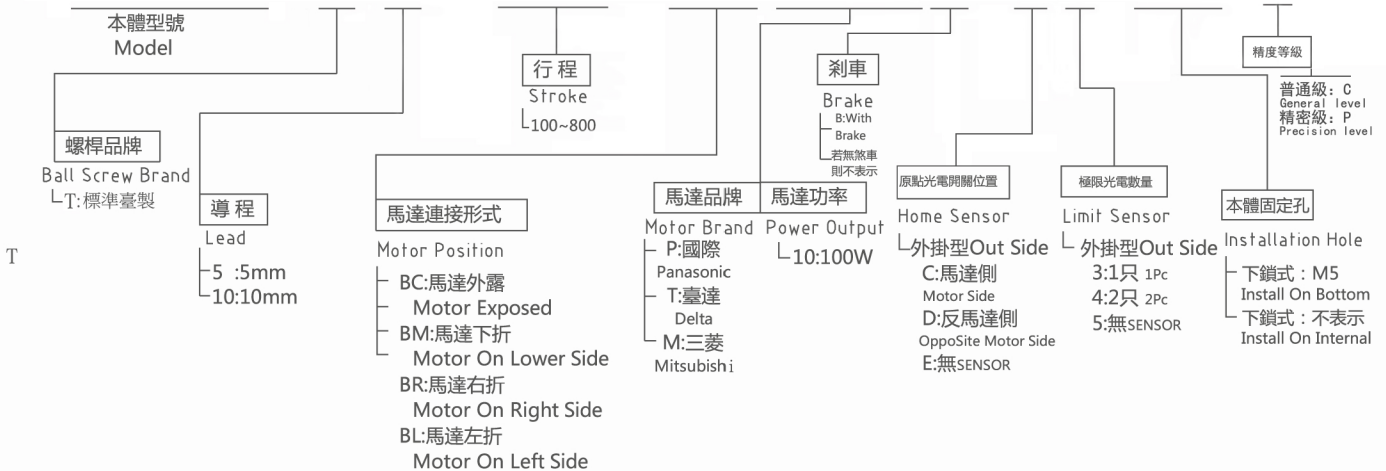
馬達容量 100W
Motor Output

滾珠螺桿 $\phi 12\text{mm}$
Ball Screw

直線滑軌 42x9.5-1支
Linear Guide

型號表示方式 Ordering Method

MY60A-T10-100L-BC-P10B-C4-M5-C



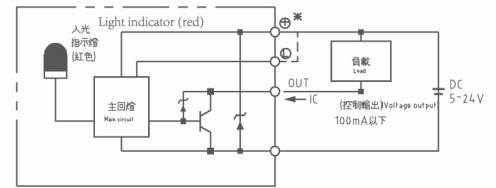


基本仕様 Specification

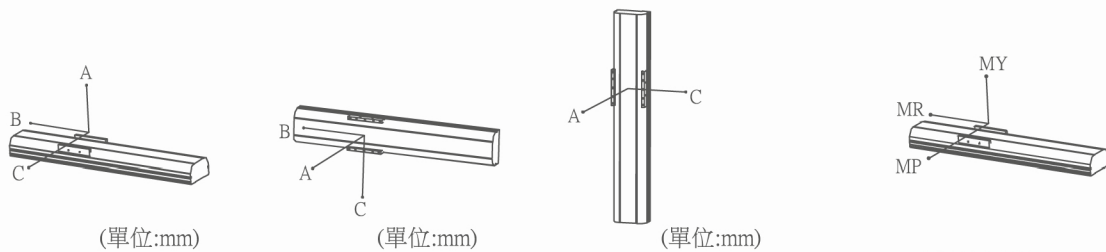
性能	位置重複精度 Repeatability (mm)	±0.01/±0.02		
	螺桿導程 Belt Lead (mm)	5	10	
	最高速度 Maximum Speed (mm/s)	250	500	
	最大可搬重量 Maximum Payload	水平使用Horizontal(kg)	30	15
		垂直使用Vertical (kg)	10	5
	定格推力 Rated Thrust (N)	341	170	
	標準行程 Stroke Pitch (mm)	100-800mm/50pitch		
部品	AC伺服馬達容量 AC Servo Motor Output(W)	100		
	滾珠螺桿外徑 Ball Screw ϕ (mm)	C5/C7 ϕ 12		
	高剛性直線滑軌 High Rigidity Linear Guide(mm)	9.5x42		
	聯軸器 Coupling (mm)	7x8		
原點感應器 Home Sensor	外掛 Outside	EE-SX672(NPN)		

*行程超過600時,會產生螺桿偏擺,此時請將速度調降

感應器接線圖 < 原點及端點 > Sensor Layout



基本仕様容許負載力距表 N.m Allowable Overhang



	水平安裝 Horizontal Installation			牆面安裝 Wall Installation			垂直安裝 Vertical Installation						
	A	B	C	A	B	C	A	C					
Lead 5	10kg	374	33	109	Lead 5	5kg	204	45	530	Lead 5	2kg	171	172
	30kg	159	0	25		10kg	72	0	245		4kg	73	74
	-	-	-	-		30kg	0	0	0		10kg	23	26
Lead 10	3kg	624	125	335	Lead 10	3kg	293	96	510	Lead 10	1kg	355	352
	8kg	273	41	121		8kg	89	14	210		2kg	165	165
	15kg	216	24	77		15kg	43	0	130		5kg	70	72

水平使用時
Static Loading Moment (單位:N.m)

MY	70 (N)
MP	80 (N)
MR	75 (N)

搭配伺服馬達一覽表 Suitable Motor Brand

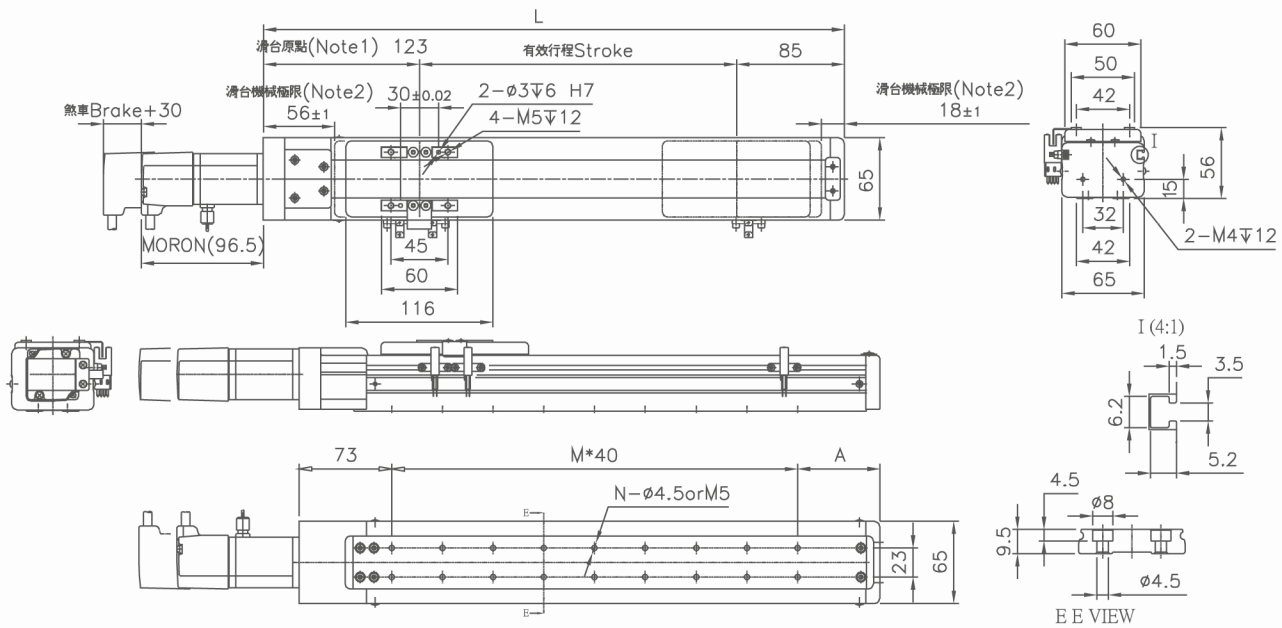
廠牌 Brand	馬達記號 Mark	煞車有無 Brake	馬達容量 W atp W	電源電壓 AC-Voltage AC-V	伺服馬達型號 Motor Model	驅動器型號 Driver Model
三菱 Mitsubishi	M	No brake (Horizontal Type)	100	220	HF-KP13	MR-J3-10A
		With brake (Vertical Type)	100	220	HF-KP13B	MR-J3-10A
國際 Panasonic	P	No brake (Horizontal Type)	100	220	MSMD012P1S	MADDT1205
		With brake (Vertical Type)	100	220	MSMD012P1T	MADDT1205
台達 Delta	T	No brake (Horizontal Type)	100	220	ECMA-C20401ES	ASD-B20121-B
		With brake (Vertical Type)	100	220	ECMA-C20401FS	ASD-B20121-B





BC: 直結外露

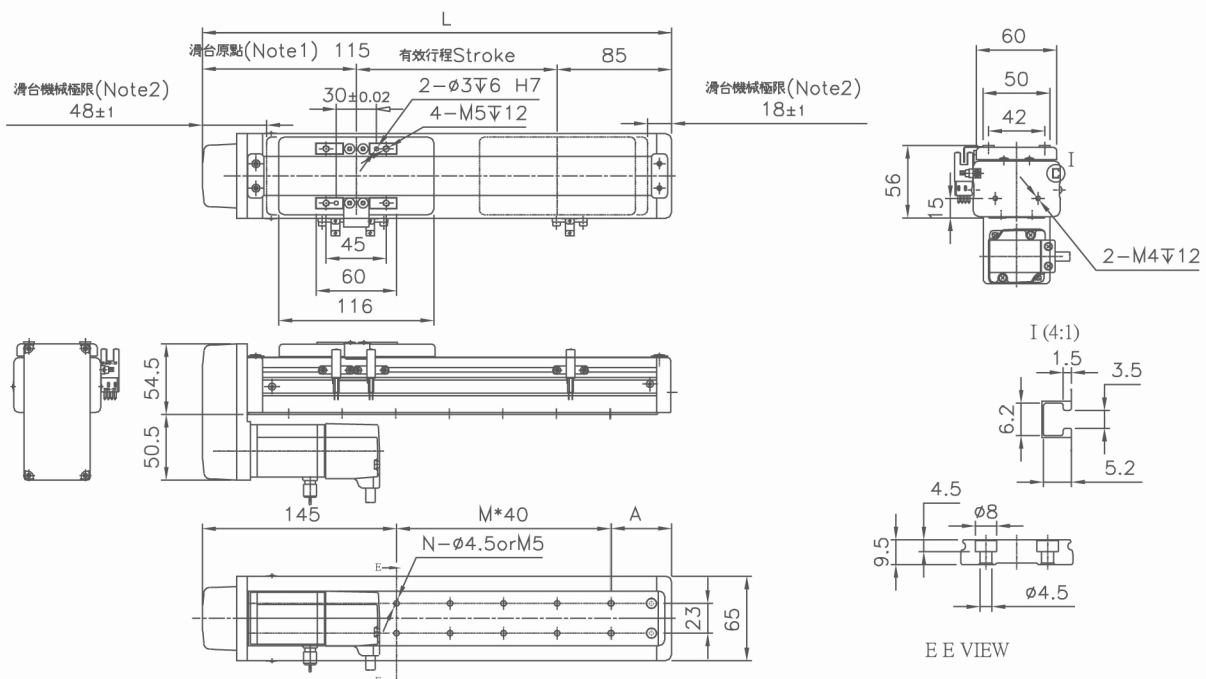
Note1: Position of the table slider when returned to the origin
 Note2: Distance from both ends to the mechanical stopper



Stroke	100	150	200	250	300	350	400	450	500	550	600	650	700	750	800
L	308	358	408	458	508	558	608	658	708	758	808	858	908	958	1008
A	35	45	55	65	35	45	55	65	35	45	55	65	35	45	55
M	5	6	7	8	10	11	12	13	15	16	17	18	20	21	22
N	12	14	16	18	22	24	26	28	32	34	36	38	42	44	46
KG	2.7	2.8	3	3.2	3.4	3.6	3.7	3.9	4.1	4.3	4.4	4.6	4.8	5	5.1

BM: 本體下折

Note1: Position of the table slider when returned to the origin
 Note2: Distance from both ends to the mechanical stopper



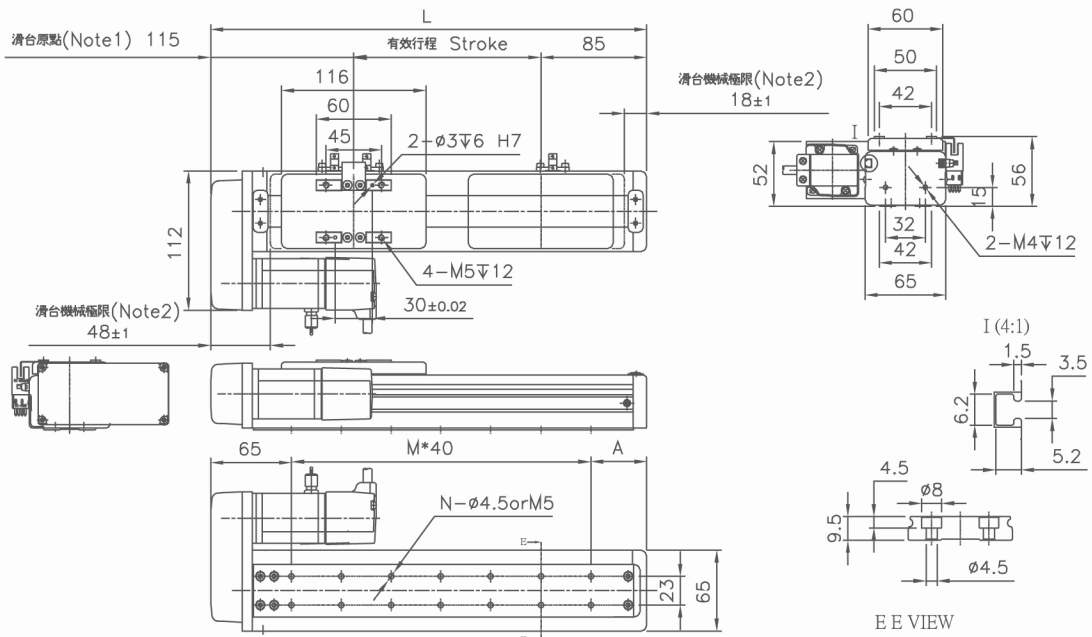
Stroke	100	150	200	250	300	350	400	450	500	550	600	650	700	750	800
L	300	350	400	450	500	550	600	650	700	750	800	850	900	950	1000
A	35	45	55	65	35	45	55	65	35	45	55	65	35	45	55
M	3	4	5	6	8	9	10	11	13	14	15	16	18	19	20
N	8	10	12	14	18	20	22	24	28	30	32	34	38	40	42
KG	2.7	2.8	3	3.2	3.4	3.6	3.7	3.9	4.1	4.3	4.4	4.6	4.8	5	5.1





BR: 本體左折

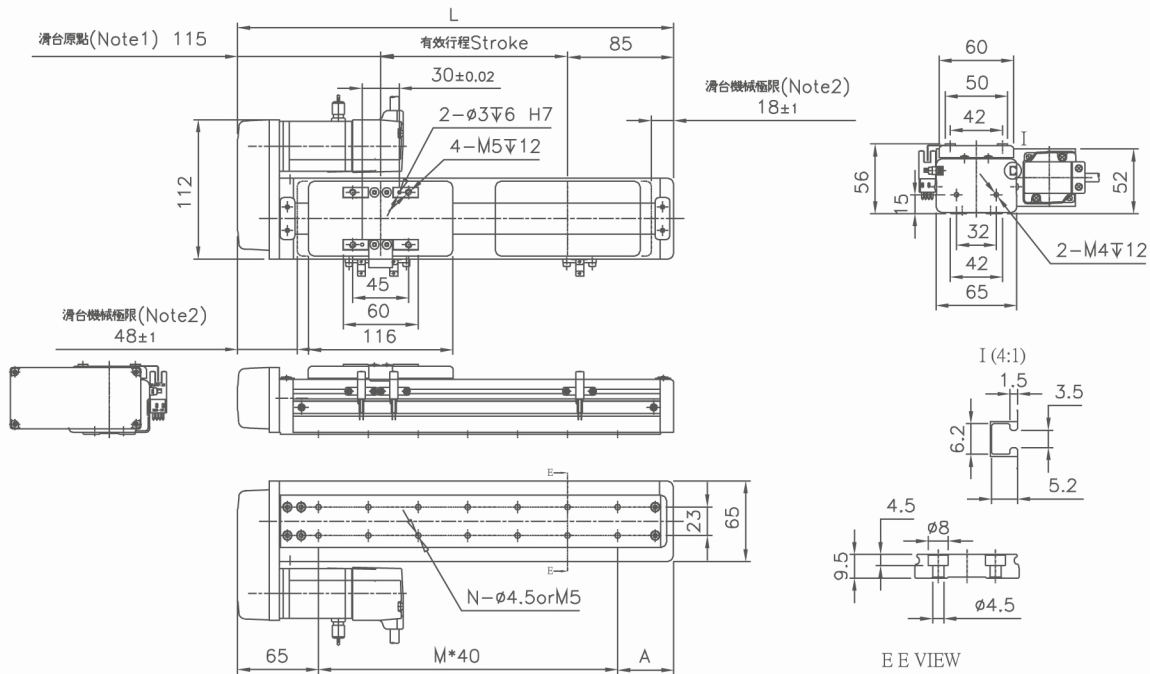
Note1: Position of the table slider when returned to the origin
Note2: Distance from both ends to the mechanical stopper



Stroke	100	150	200	250	300	350	400	450	500	550	600	650	700	750	800
L	300	350	400	450	500	550	600	650	700	750	800	850	900	950	1000
A	35	45	55	65	35	45	55	65	35	45	55	65	35	45	55
M	5	6	7	8	10	11	12	13	15	16	17	18	20	21	22
N	12	14	16	18	22	24	26	28	32	34	36	38	42	44	46
KG	2.7	2.8	3	3.2	3.4	3.6	3.7	3.9	4.1	4.3	4.4	4.6	4.8	5	5.1

BR: 本體右折

Note1: Position of the table slider when returned to the origin
Note2: Distance from both ends to the mechanical stopper



Stroke	100	150	200	250	300	350	400	450	500	550	600	650	700	750	800
L	300	350	400	450	500	550	600	650	700	750	800	850	900	950	1000
A	35	45	55	65	35	45	55	65	35	45	55	65	35	45	55
M	5	6	7	8	10	11	12	13	15	16	17	18	20	21	22
N	12	14	16	18	22	24	26	28	32	34	36	38	42	44	46
KG	2.7	2.8	3	3.2	3.4	3.6	3.7	3.9	4.1	4.3	4.4	4.6	4.8	5	5.1

